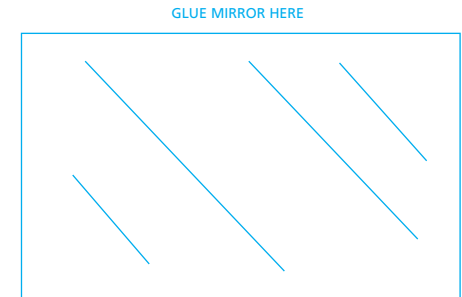
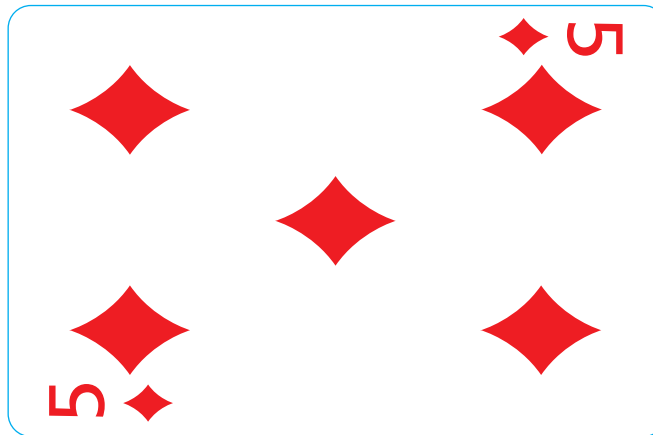
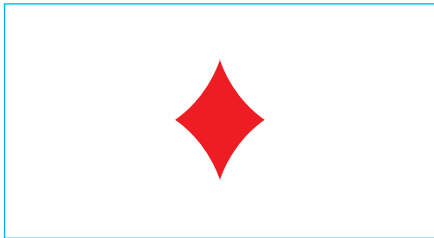
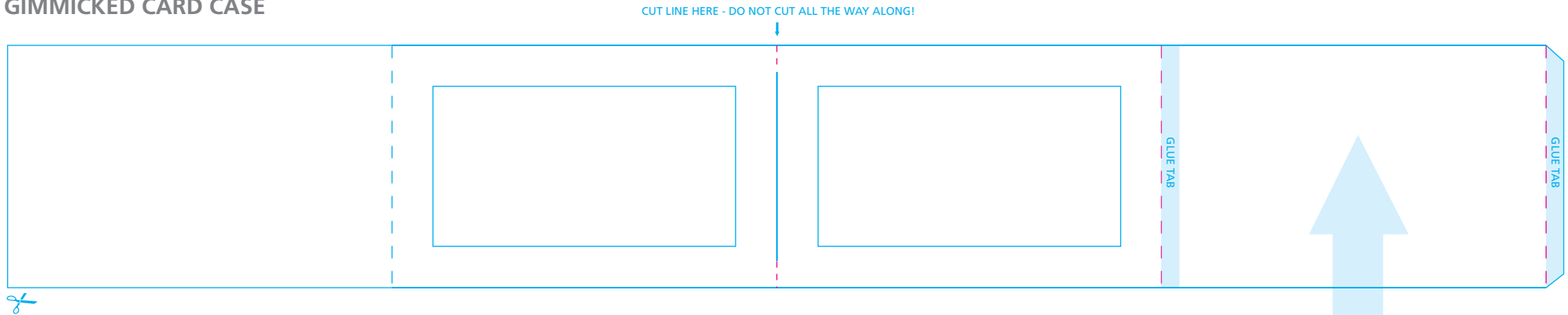


### GIMMICKED CARD CASE



Simply print on to some card or thick paper. Then carefully cut out with scissors.

Glue the mirror on the flap as show. The middle card section slides in, on top of the mirror.

Finally fold along the dotted lines as shown and glue together, or use double sided stick tape.

#### LEGEND:

Fold Towards: - - - - -

Fold Away: - - - - -

Cut Line: —————

Glue Tab: ■■■■■

### UN GIMMICKED CARD CASE

